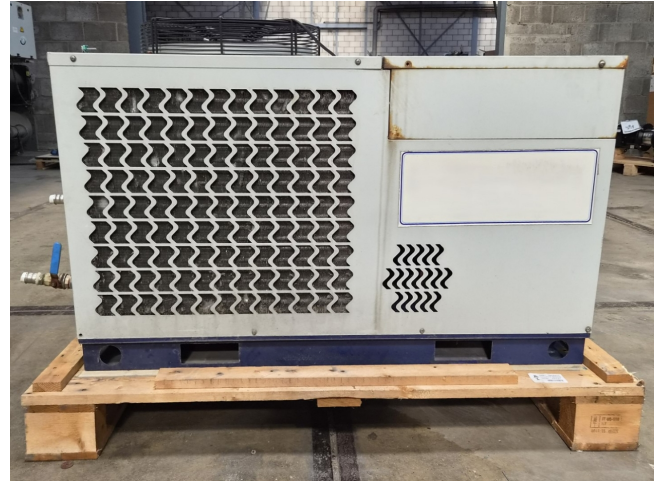


# MTA TAE EVO 020

## Specifications

Brand	MTA
Tipo	TAE EVO 020
Product type	Air Cooled Chiller
Capacidad kW	9,5
Capacity Tons	2,7
Refrigerante	Freon
Tipo de Refrigerante	R407C
Liquid buffer tank	✓
Pump	✓
Peso kg.	142
Sizes	1400x560x800 mm (LxWxH)
Compressor(s) type & model	x1 Danfoss MTZ28JE4A
Display	Dixell
Number of fans	1
Fan specifications	50 Hz - 1450 RPM - 0,14 kW
Remarks	Y.o.b. 2013
Stock	1



## Description

### Used MTA TAE EVO 020

Used MTA TAE EVO 020 air-cooled chiller on Freon R407C. Complete with 1 Danfoss MTZ28JE4A reciprocating compressor, condenser with 1 Ebmpapst A4D400-AP12-01 - 50/60 Hz - 1450/1690 RPM - 0,14/0,19 kW - diameter 400 mm that produces an airflow of 3.100 m<sup>3</sup>/h, Lowara CIE70/5 water pump, liquid buffer tank and a control cabinet with a Dixell display. \*All components of this used chiller will be tested on adequate performance, leak free condition (condensing blocks, compressors, fans, control panel and so forth). Choosing HOSBV means buying with warranty. We perform a industrial cleaning. if requested we can arrange your shipment.

